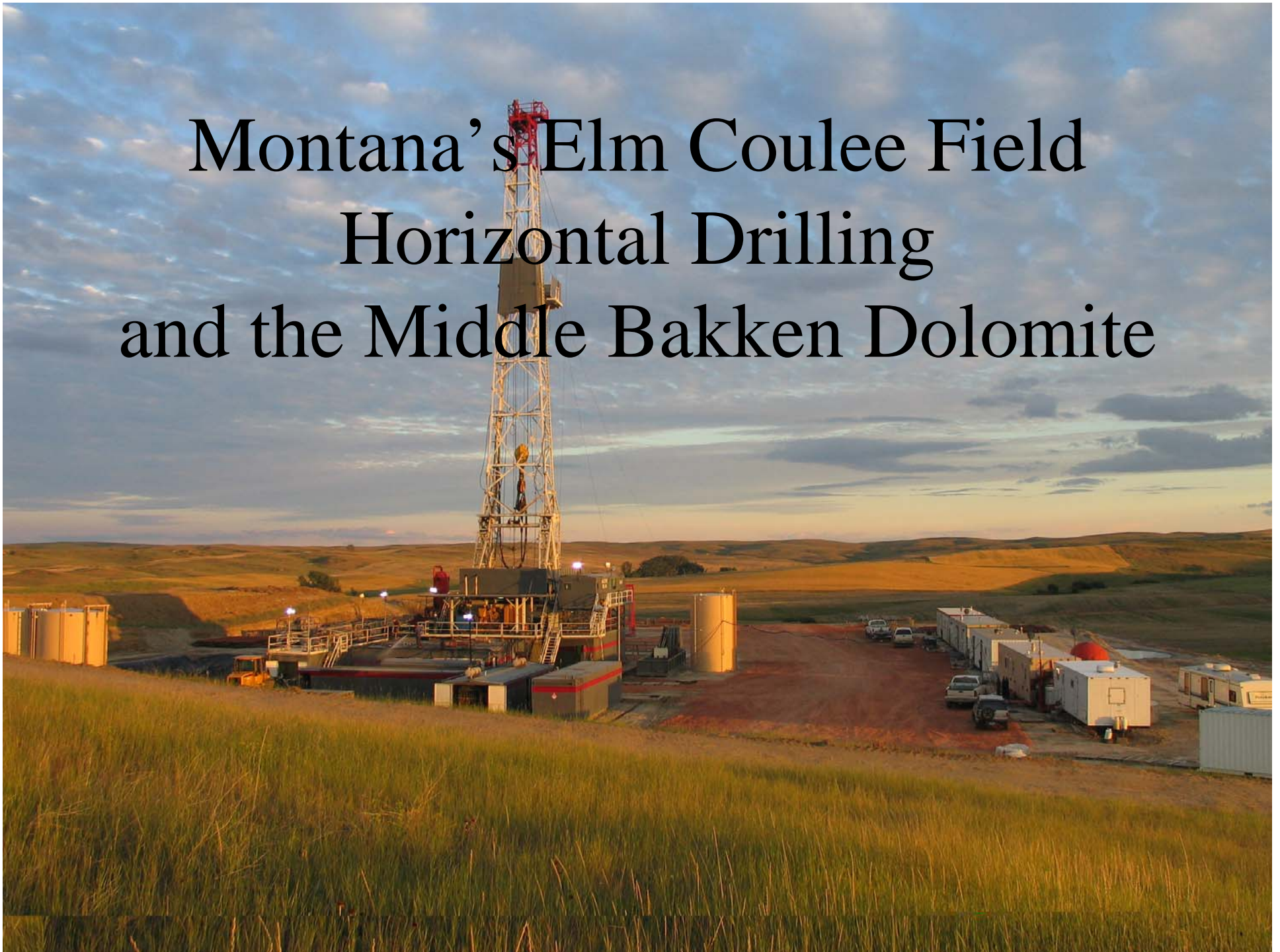
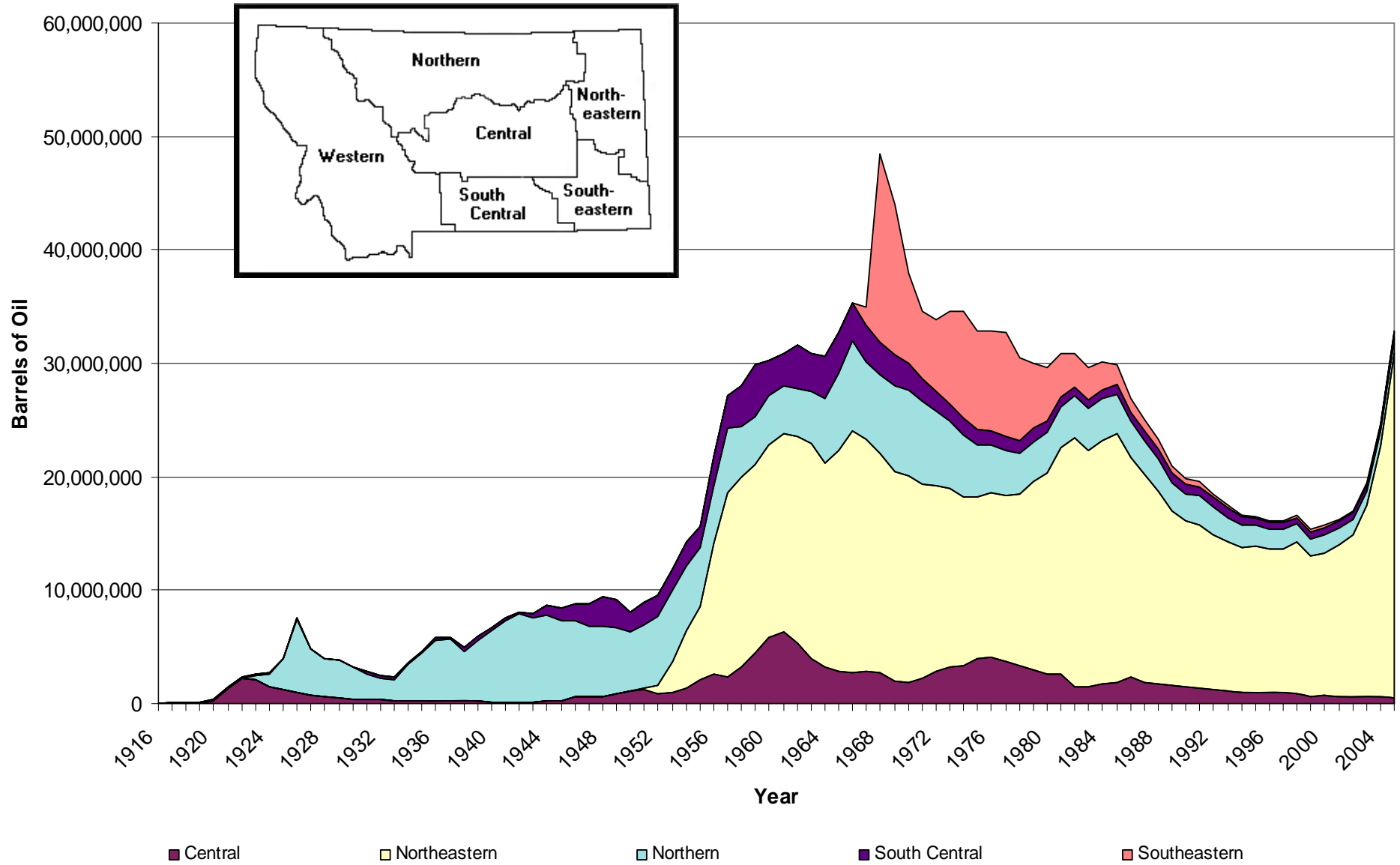


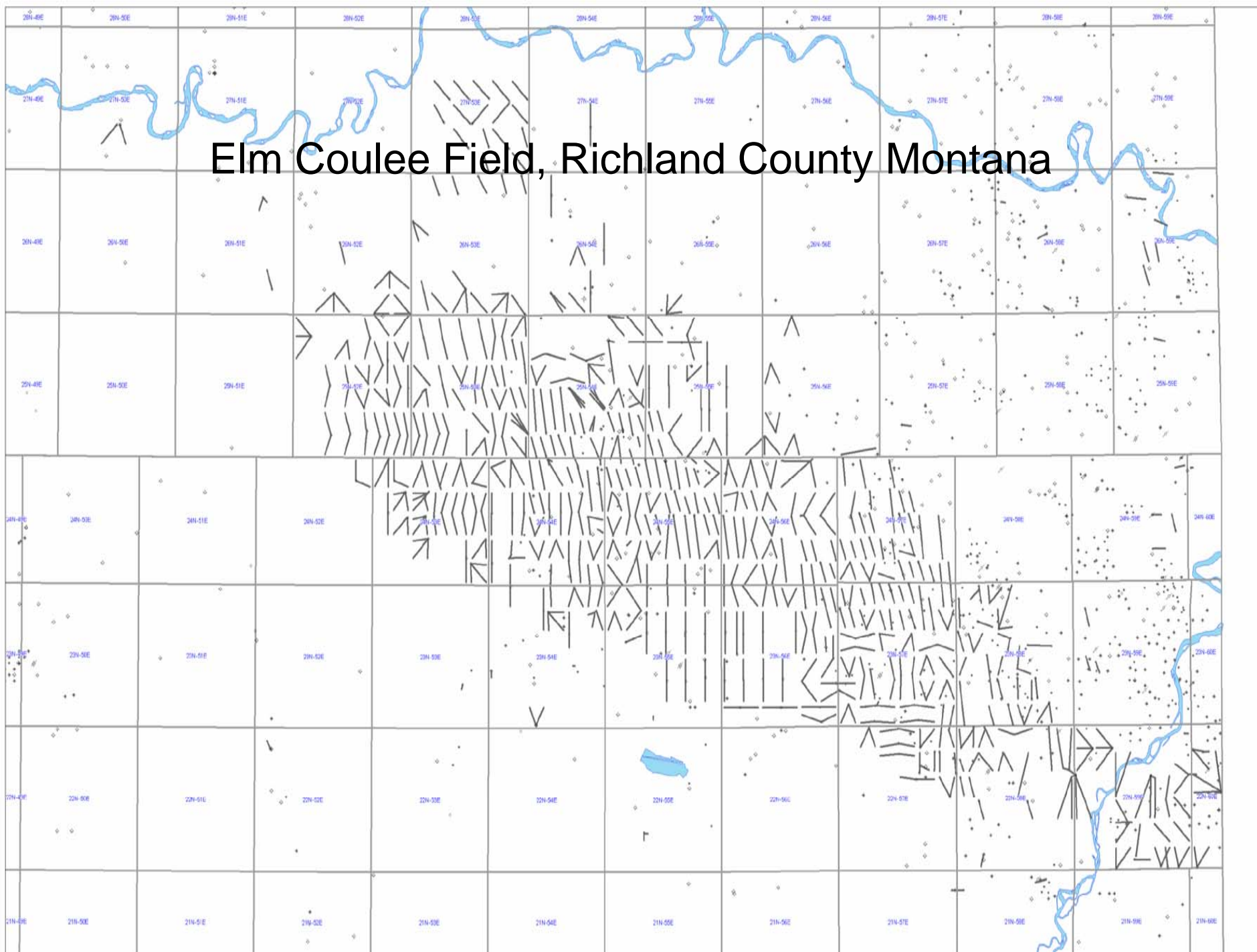
Montana's Elm Coulee Field Horizontal Drilling and the Middle Bakken Dolomite



Montana Oil Production, 1916 through 2005



Elm Coulee Field, Richland County Montana



Richland-Fallon Oil Production

Richland County (Bakken only)		
	2001	2005
wells	11	309
production	277,784	15,727,658
Fallon County		
wells	599	622
production	5,984,623	7,545,214

2005 Summary

Production

	Reported Volume	Change From Previous Year
Total Liquids Production	32,855,152 Barrel	32.94%
Oil	32,848,720 Barrel	32.95%
Condensate	6,432 Barrel	1.85%
Total Gas Production	108,510,120 MCF	10.77%
Associated Gas	16,919,767 MCF	59.12%
Natural Gas	91,590,353 MCF	4.88%
Oil And Condensate Production Allocated To Fields		32,855,152 Barrels
Gas Production Allocated To Fields		108,510,120 MCF

Permits

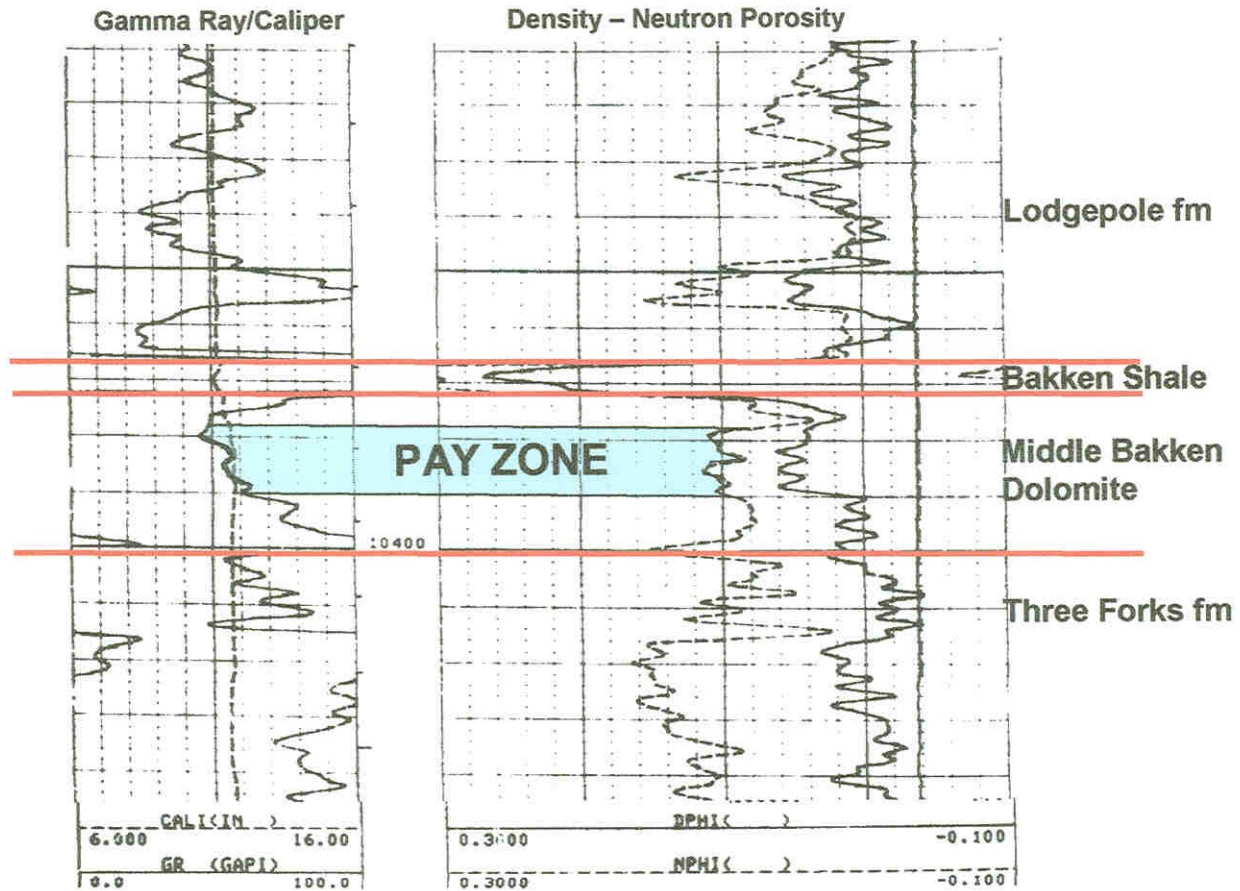
New Wells Permitted	1306	Re-issued Permits	301
Vertical Wells	1068		
Horizontal Wells	238		
Permits for Horizontal Re-entry Of Existing Vertical Well			44

Board Orders

Total Number Of Orders Issued	522	
Orders Included The Following Actions:		Number Of Actions
Units Or Enhanced Recovery Projects		0
Exception To Spacing Or Field Rules		141
Field Delineation, Enlargement, Or Reduction		15
Certification For Tax Incentive		18
Temporary Or Permanent Spacing Unit Designation		321
Class II Injection Permits		22
Other		47

TYPE LOG

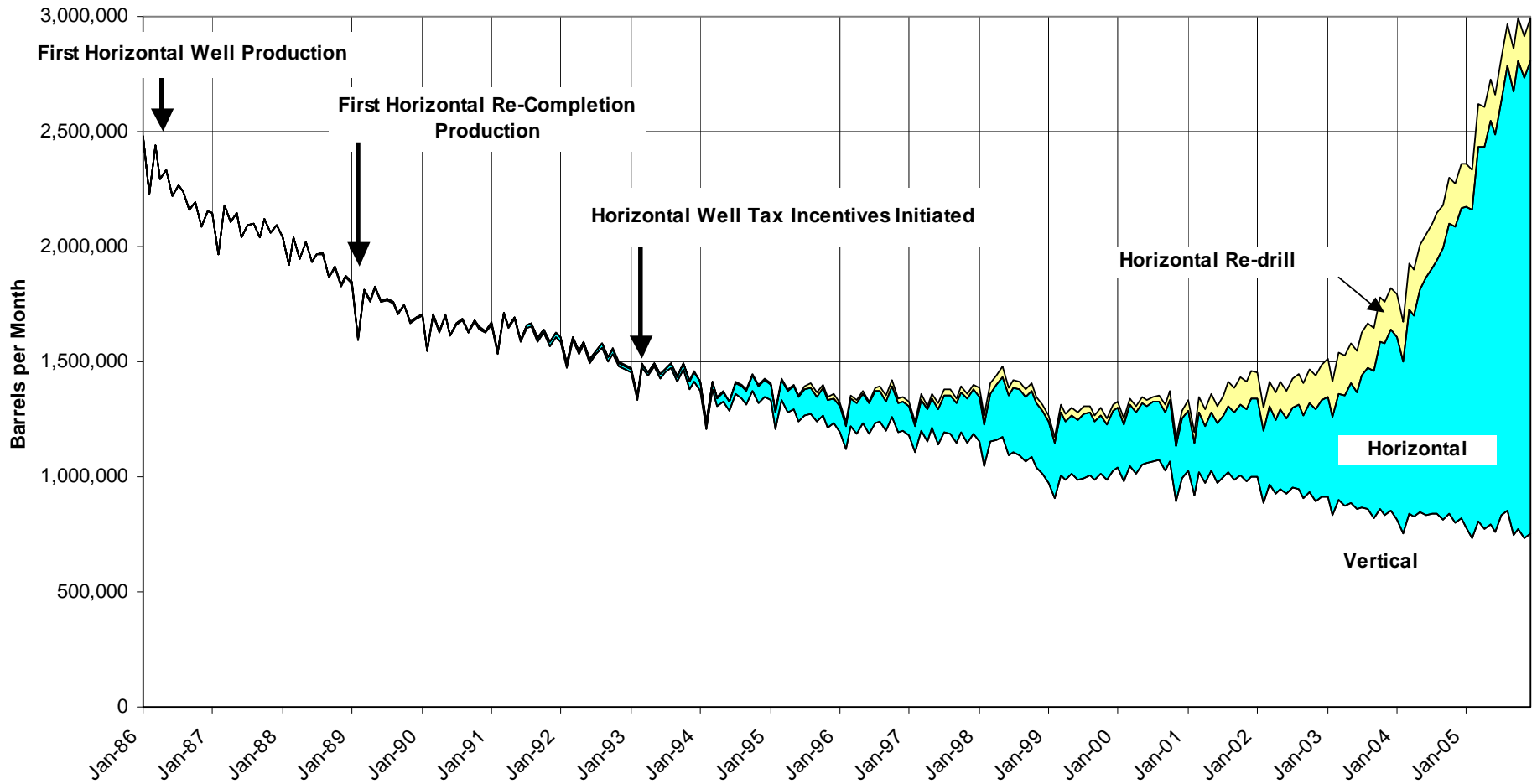
Apache #1 Hill NWSE Section 28 - T24N - R56E



**BAKKEN RESERVOIR DATA
(Horizontal)**

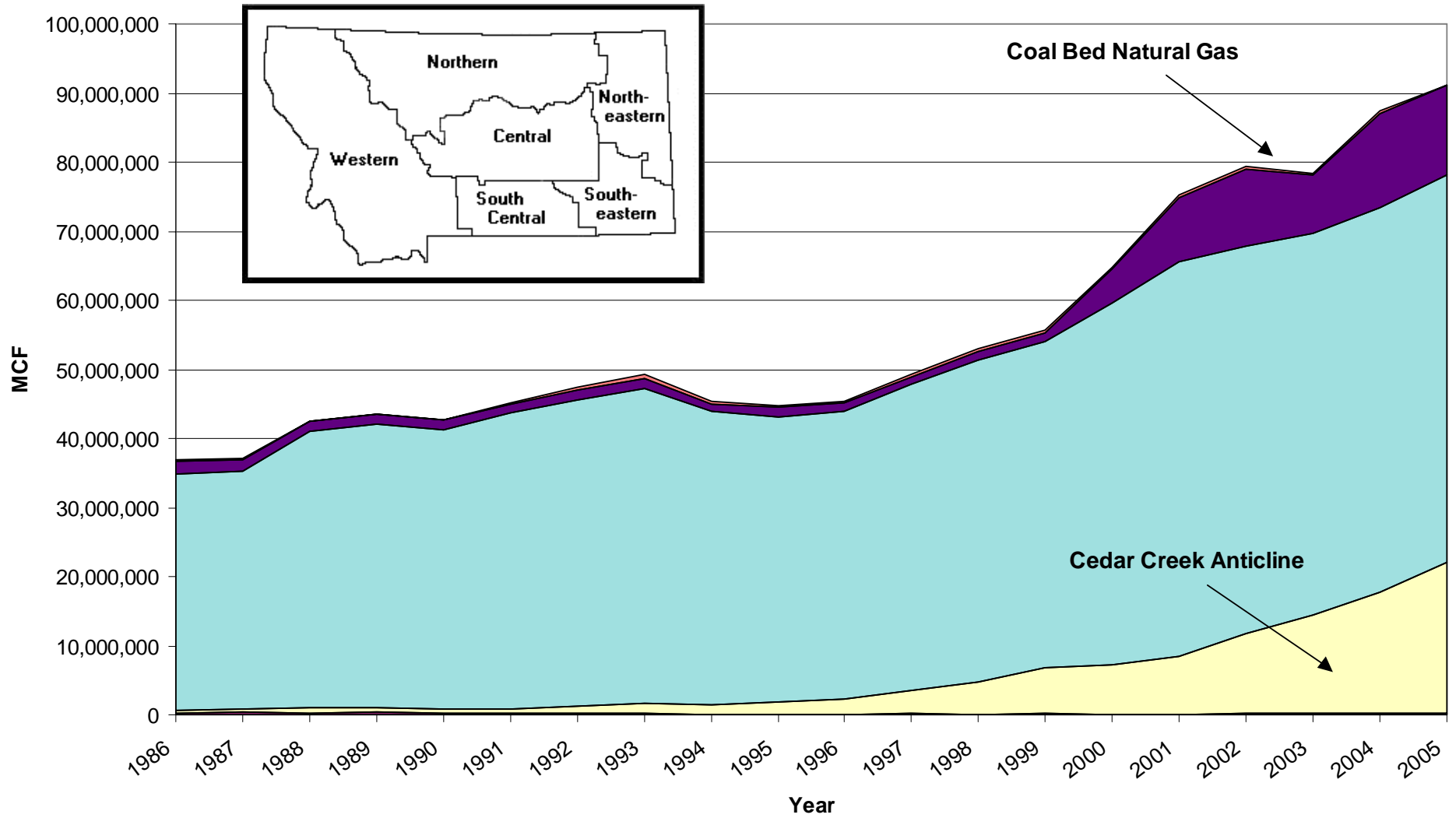
Formation Type:	Fractured Silty Dolomite
True Vertical Depth:	10,210' AVG
Vertical Thickness:	10'
Measured Total Depths:	15,122' ± SE Lateral (#1)
	13,994' ± SW Lateral (#2)
Reservoir Penetration:	4,316' ± SE Lateral (#1)
	3,382' ± SW Lateral (#2)
Porosity:	8% average
Water Saturation:	25%
Stimulation:	Gelled Water/Sand Frac
Initial Production Rate:	356 BOPD, 114 MCFGPD
Oil Gravity:	42° API @ 60° F
Bottom Hole Temperature:	220° F
Formation Volume Factor:	1.20
GOR:	500
Gas Gravity:	0.95
BTU:	1,550±
Oil-in-Place (BO/Acre-ft):	388
Oil-in-Place (BO/640 Acres):	2,483,000 bbls
Primary Oil Recovery:	415,000 bbls
Primary Recovery Factor:	16.7%

Monthly Montana Oil Production, Vertical vs. Horizontal Wells



Vertical and Horizontal Production

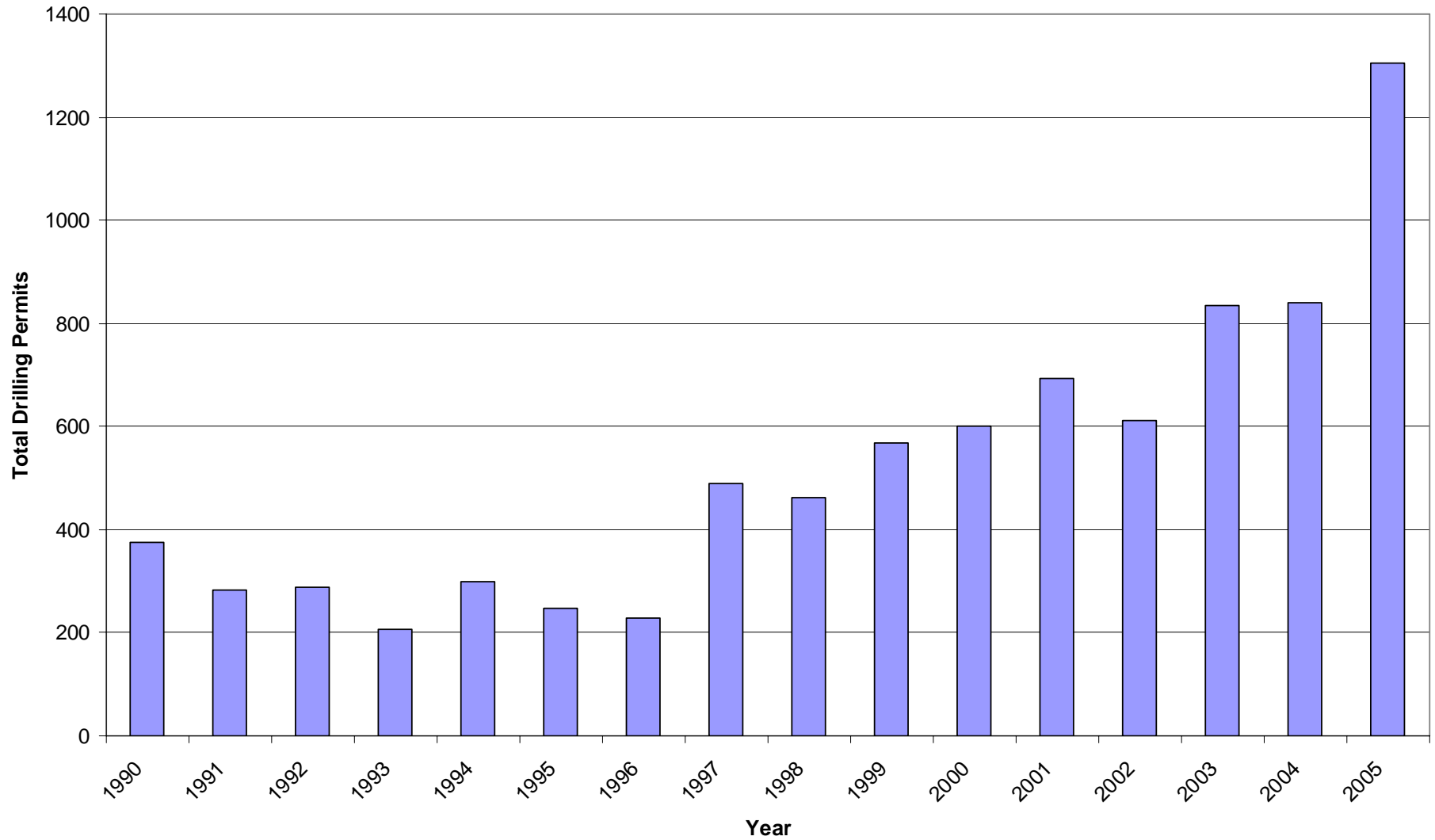
Montana Natural Gas Production, 1986 through 2005



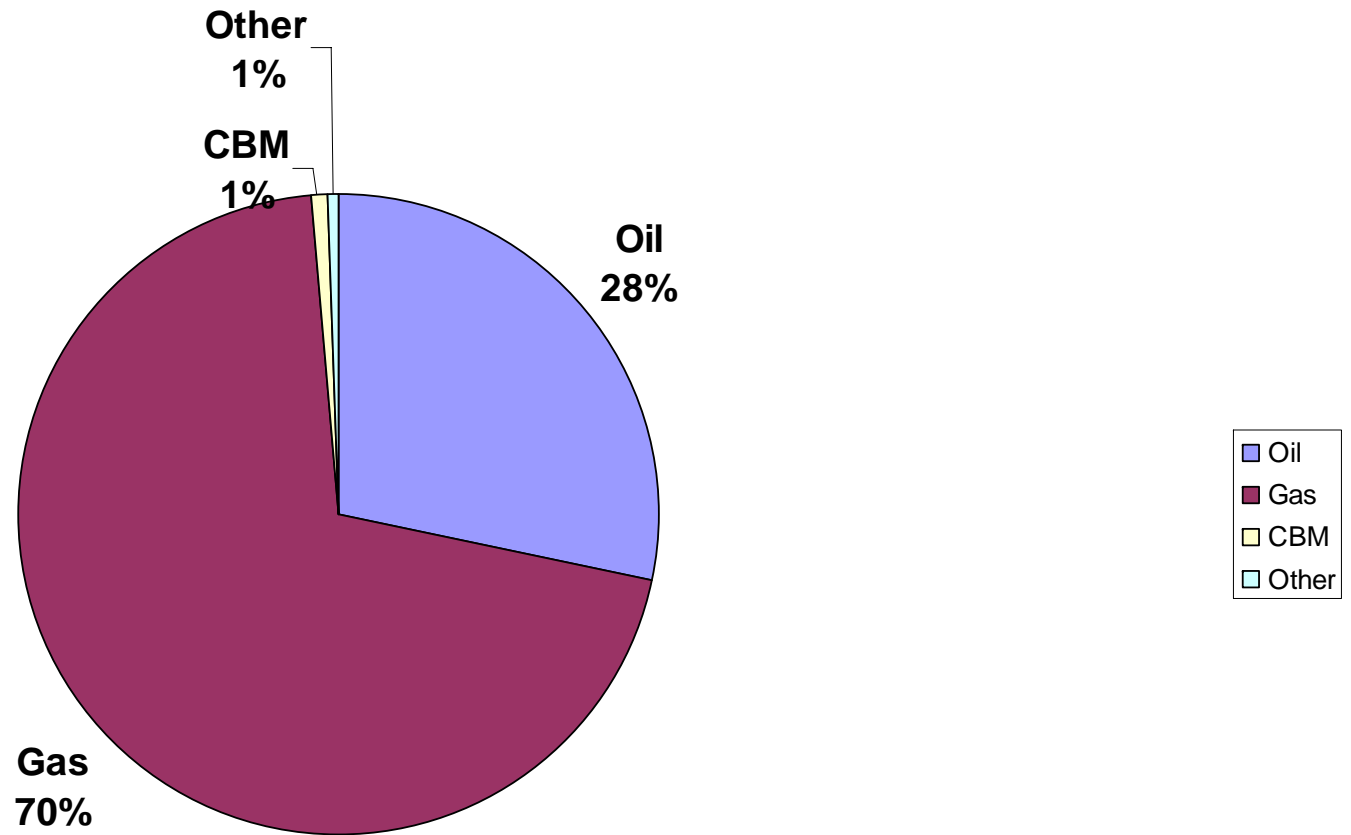
Central
 Northeastern
 Northern
 South Central
 Southeastern

Historical Permit Activity

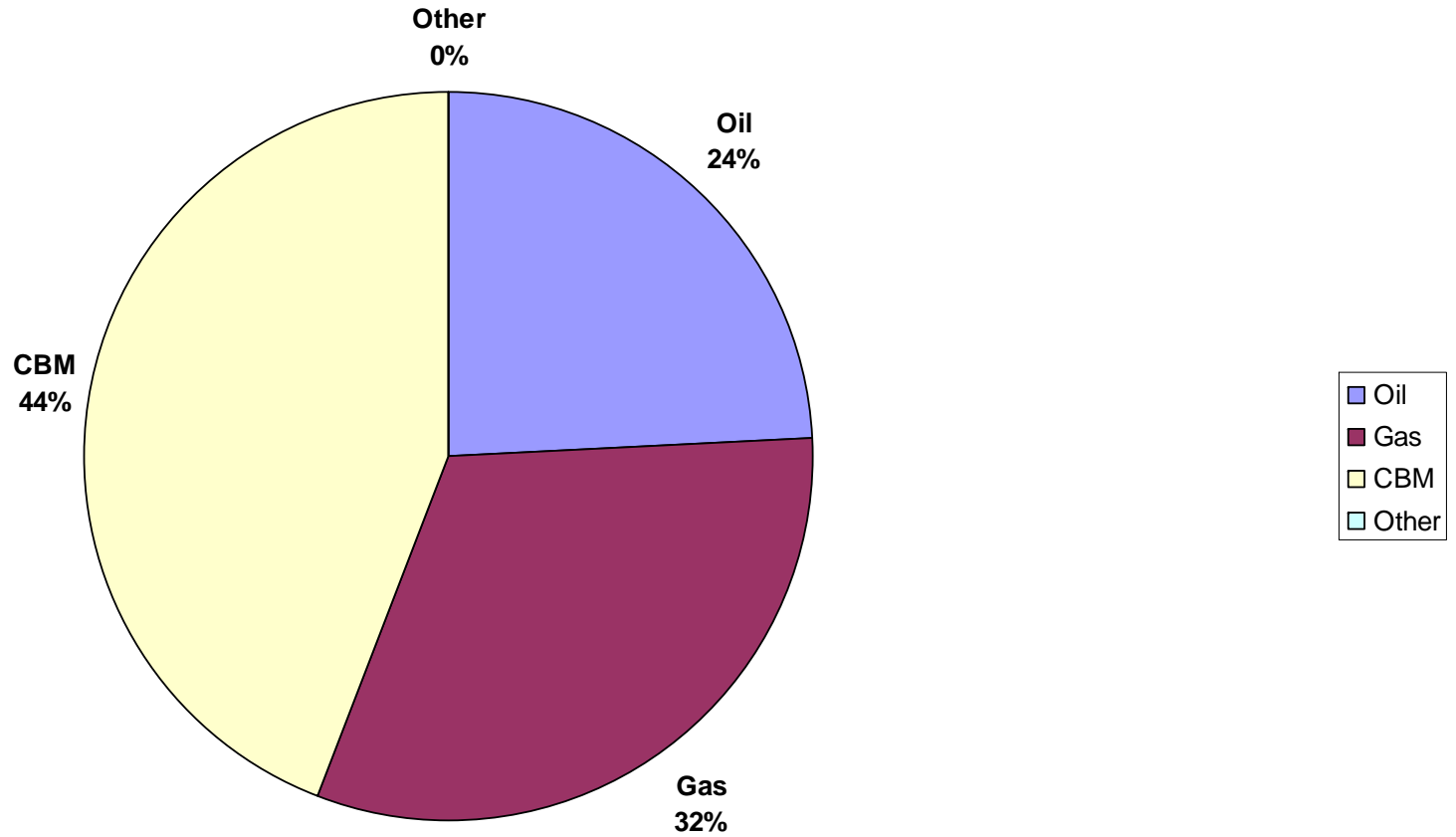
Montana Drilling Permits Issued, 1990 through 2005



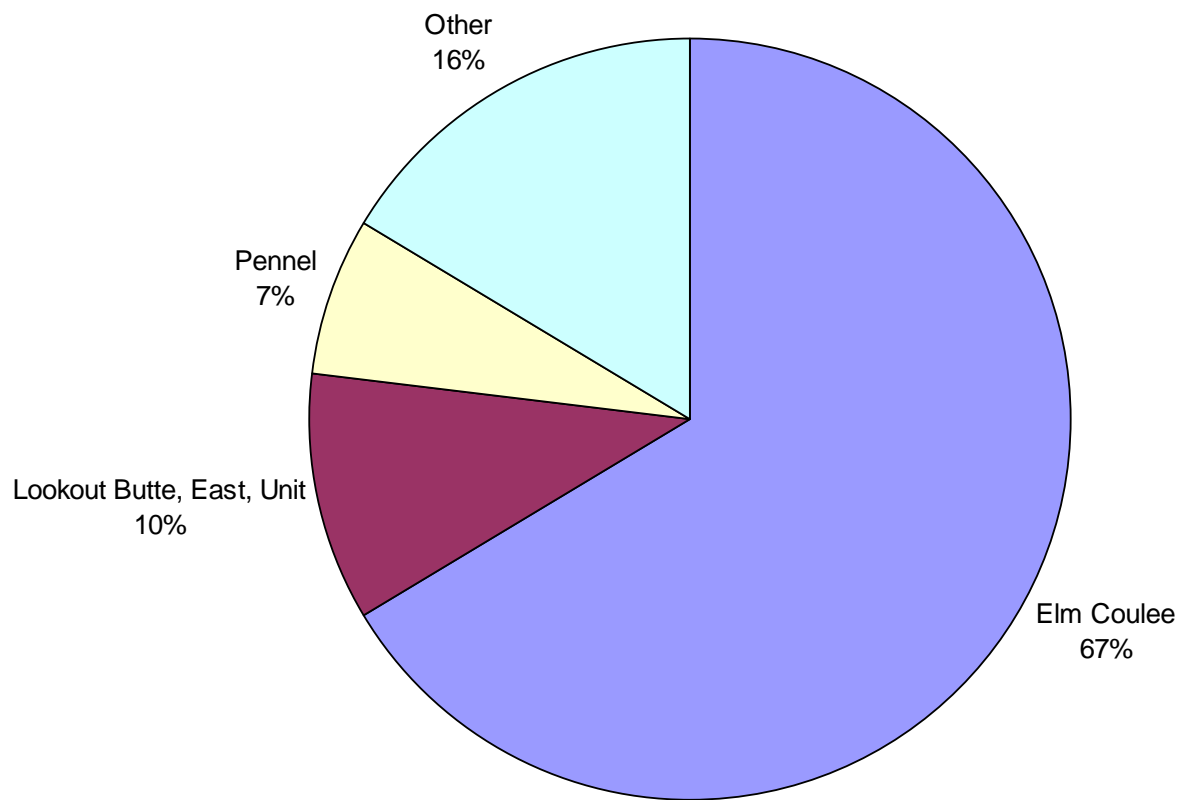
Montana Permits Issued During 1990, by Well Type (375 Total Permits)



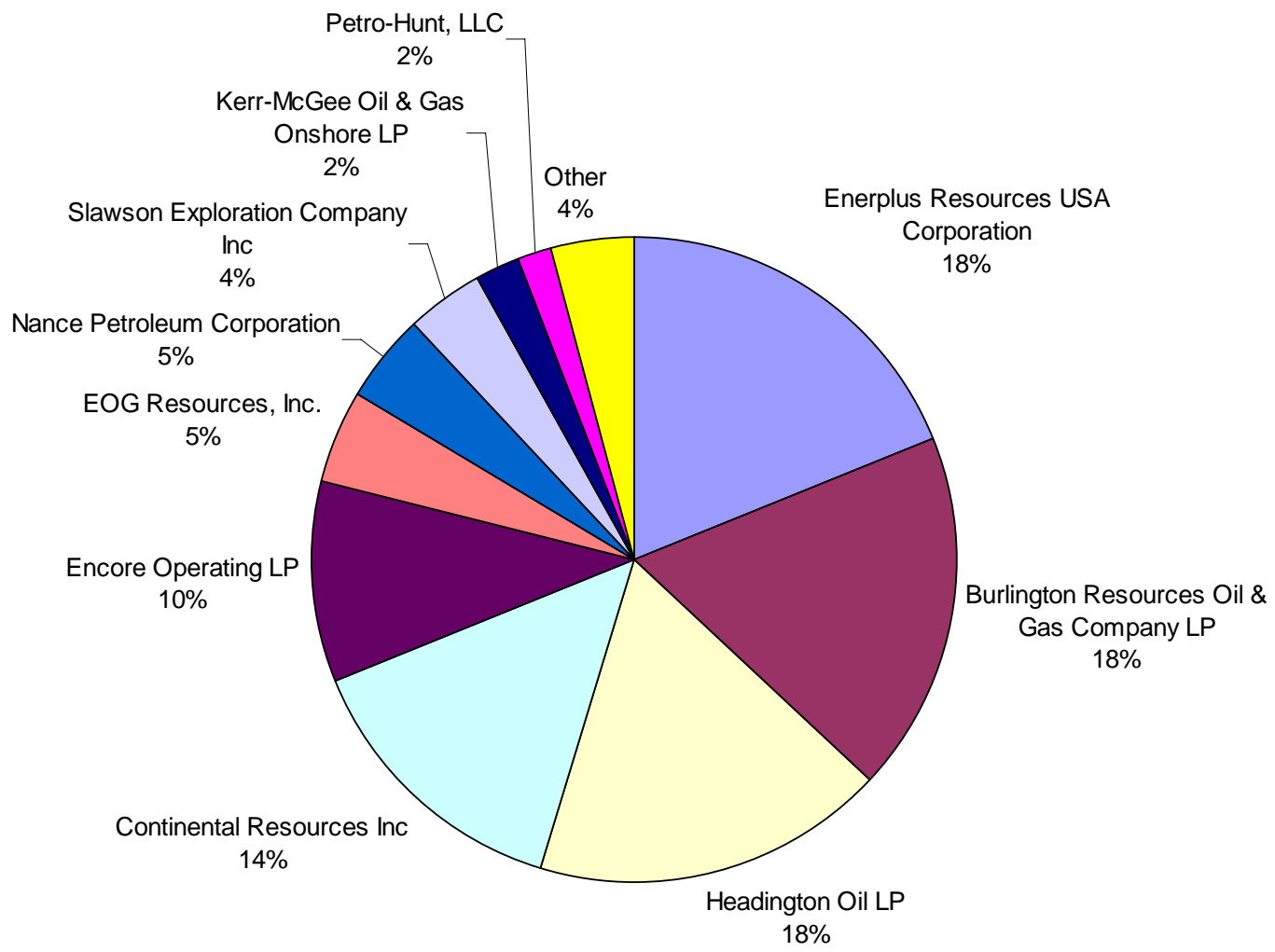
**Montana Permits Issued During 2005, by Well Type
(1306 Total Permits)**



2005 Production by Field, All Horizontal Wells
(23,706,518 Barrels, or Approximately 72% of Total Oil Production)



2005 Production From Drilled Horizontal Wells, by Operator
(21,343,670 barrels, or Approximately 65% of Total Oil Production)



2005 Production From Horizontally Recompleted Wells, by Operator
(2,362,848 Barrels or Approximately 7% of Total Oil Production)

